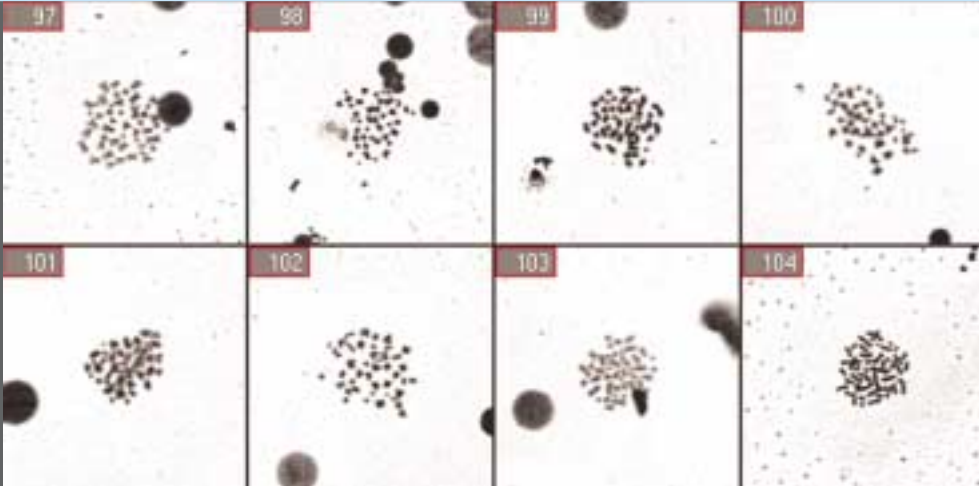


Metafer



MSearch

Automatic
Metaphase Finder

Automatic Metaphase Finding
in Brightfield and Fluorescence

Efficient Detection Algorithms for Precise
Results at Ultra-Fast Scanning Speed

Easy Relocation of Metaphases with
High Quality Gallery Images

Seamless Integration with Karyotyping
and FISH Imaging Software



M E T A
S Y S T E M S

www.MetaSystems.de

MSearch

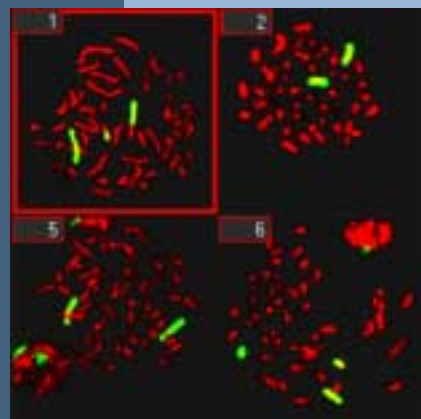
Automatic Metaphase Finder

The fast MSearch metaphase finding software, running on the versatile scanning hardware platform Metafer, helps to vastly increase the throughput in routine and research laboratories. Unattended over night scanning saves valuable daytime for the actual analysis.

The superior performance of the system is based on a unique concept bringing together high quality hardware with innovative software algorithms. The scanning time for an average slide in brightfield is less than 6 min. During the scan detected metaphases are saved as high quality gallery images along with their coordinates. After the scan it takes just one mouse click to relocate any metaphase under the microscope.

Metaphases are found in both brightfield and fluorescence. Metafer - MSearch comes with classifiers for a variety of standard tissues. The integrated, interactive classifier training feature provides flexible adaptation to individual needs.

Metafer - MSearch handles up to 8 slides per search in its standard configuration. Its open concept allows the configuration as stand-alone system as well as in various networked environments, e.g. linked to Ikaros karyotyping or Isis FISH imaging workstations.



MetaSystems

Automatic Imaging Solutions
Robert-Bosch-Strasse 6
D-68804 Altlussheim
Germany
info@metasystems.de



www.MetaSystems.de